

skyla Hi Analyzer

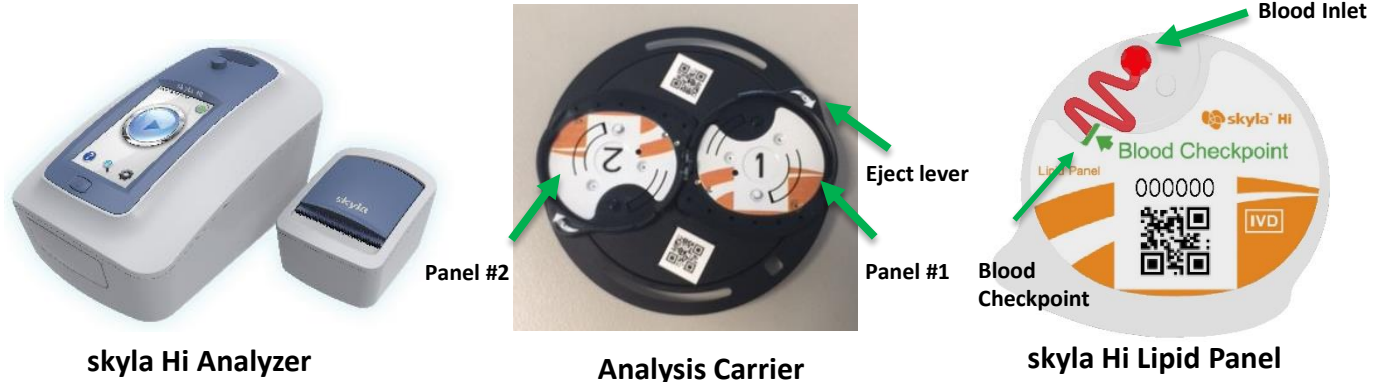
Quick Manual for Lipid Testing

■ Preparing for analysis

Applicable Sample Material

- Fingertip whole blood (WB)
- Serum
- Lithium heparinized Plasma
- Venous WB with anticoagulant (Lithium heparin)
- Control solution

Required Items



■ Testing procedure

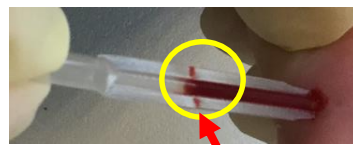
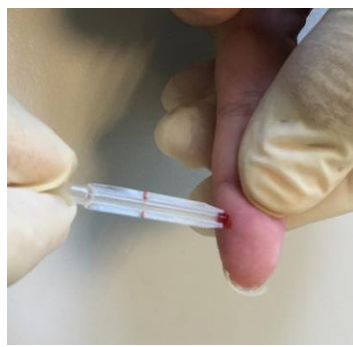
Step 1: Sample Collection



1. Tear the foil pouch and remove the skyla Hi Lipid Panel. Avoid touching the optical reading area.



2. Disinfect the skin surface and use a blood lancet to prick the disinfected skin surface.

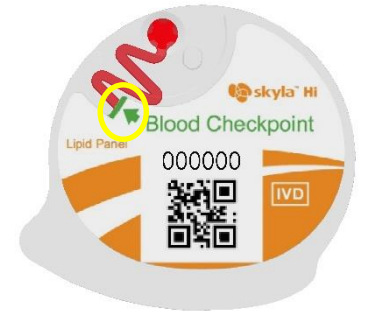


Red marking & Air vent

3A-1. Capillary pipet must be held horizontal to the blood droplet to collect the blood sample until the red marking.



3A-2. Put the capillary pipet point at the Blood Inlet of Panel, use fingers of one hand to cover the air vents on Red Marking of the capillary pipet, and the other hand to squeeze the bulb of the capillary pipet to place sample into the Blood Inlet of Panel.



3A-3. The sample must flow to the labeled Blood Checkpoint.

⚠ Must wipe off excess sample around Blood Inlet.



Optical reading area

Step 2: Analysis

Note



1. Align Lipid Panels according to the labels on the Analysis Carrier. If using only one Lipid Panel, a Dummy Balancer must be placed at Panel #2.



Dummy Balancer

2. Press the aligned Lipid Panels into the Analysis Carrier.


⚠ Do not make any modifications to the Analysis Carrier and Skyla Lipid Panel.

■ Release panels from the carrier



Press the **eject lever** clockwise on the carrier. The Lipid Panel will unlock and it can be removed with your thumb.



3. Press  to open the drawer.



4. Place the carrier into the drawer and press OK to start analyzing.

Note

- The skyla Hi Lipid Panel must be used within 10 minutes after opening the foil pouch.
- Once the skyla Hi Lipid Panel is filled with sample, the analysis must be performed within 5 minutes.