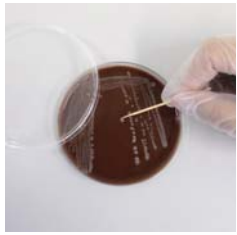
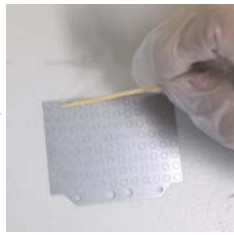


Sample Pretreatment Procedure for Autof MS1000

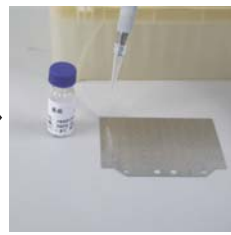
1. Direct Coating Method:



Select isolated colonies
(Do not touch the
medium)



Smear onto the target plate
(Do not apply too much or
too little sample)



Overlay 1µL Matrix solution

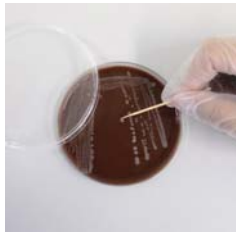


Dry at 40°C for 1 minute

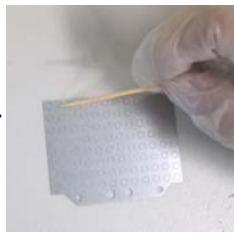


Connect the holder and
place into the MALDI for
identification

2. Extended Method:



Select isolated colonies
(Do not touch the
medium)



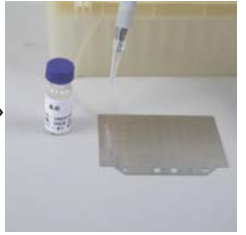
Smear onto the target plate
(Do not apply too much or
too little sample)



Add 1µL Lysate 1



Dry at 40°C for 1 minute



Overlay 1µL Matrix solution



Dry at 40°C for 1 minute



Connect the holder and
place into the MALDI for
identification