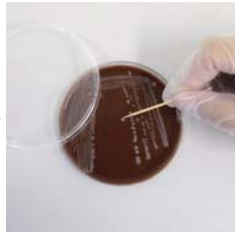


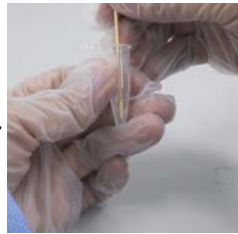
3. Extraction Method:



Add 300 μ L ultrapure water into the centrifuge tube



Select isolated colonies (1-2 median size)



Transfer the colonies to the centrifuge tube



Mix well for 30 seconds



Add 900 μ L pure alcohol into the centrifuge tube



Mix well for 30 seconds



Centrifuge at 14,000rpm for 2 minutes



Decant the supernatant



Dry the sediment at 37-40 $^{\circ}$ C for 2-5 minutes until there are no obvious water marks



Add 10 μ L Lysate 1



Mix well for 30 seconds



Add 10 μ L Lysate 2



Mix well for 30 seconds



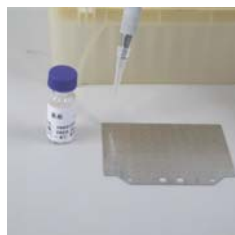
Centrifuge at 14,000rpm for 2 minutes



Inoculate 1 μ L supernatant onto the target plate



Dry at 40 $^{\circ}$ C for 1 minute



Overlay 1 μ L Matrix solution



Dry at 40 $^{\circ}$ C for 1 minute



Connect the holder and place into the MALDI for identification