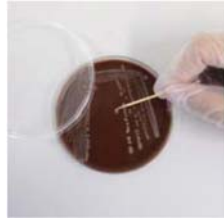


## 6. Filamentous Fungi:



Add 1mL Ethanol into a 1.5mL centrifuge tube



Add a small amount of mycelium or spores



Mix well for 30 seconds



Centrifuge at 13,000rpm for 2 minutes



Decant the supernatant



Remove as much as possible of the supernatant using a pipette



Add 30 $\mu$ L of MSA05



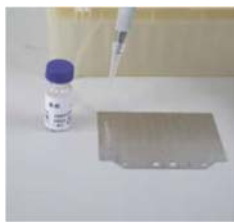
Mix well for 30 seconds



Inoculate 1 $\mu$ L supernatant to the target slide



Dry at 40C for 1 minute



Overlay 1 $\mu$ L Matrix solution



Dry at 40C for 1 minute



Place into the MALDI for identification